



SMARTSPACE APPLICATIONS



AEROSPACE

enquiries@ubisense.net

www.ubisense.net

Production Logistics



Ubisense monitors the flow of kits and subassemblies in the plant and detects deviations from plan creating a real-time view of status and alerts. Operations teams can now proactively maintain JIT and JIS flow from origin to point of use with the aid of real-time guidance and automatic verification.

Assembly



SmartSpace continuously monitors the movement of WIP, tools and equipment throughout the production process, revealing real-world production flow and detecting deviations from plan. This real-time view of production reality enables operations teams to proactively optimise productivity and quality, while enabling continuous improvement teams to quickly identify process waste and instability.

Tooling Management



SmartSpace continuously monitors the movement of tools and equipment throughout the production process, revealing real-world movements, utilisation and detecting non-compliant use. This real-time view of utilisation enables operations teams to improve productivity by ensuring tools and equipment are optimally distributed and used, non-conformant tools are quarantined and inventory levels are optimised.

Audit & Compliance



SmartSpace brings multiple different assembly and MRO verification processes together in a reliable, digital build record for complex products and assemblies. With both real-time and digital-ledger capabilities integrated into one platform, operations teams can rely on SmartSpace to immediately identify non-conforming tool, equipment or parts use within their assembly process, while quality and compliance teams gain a digital build record that is unmatched in both detail and reliability.

Asset Management



SmartSpace monitors the location of tools and equipment throughout multiple production sites, where build and test processes are widely dispersed. Operations teams can now instantly find required resources, increasing productivity and decreasing order-to-delivery times by eliminating search waste.



SMARTSPACE
Production Logistics
Monitor



SMARTSPACE
Process
Monitor



SMARTSPACE
Tooling
Monitor



SMARTSPACE
Compliance
Monitor



SMARTSPACE
Asset
Monitor

SMARTSPACE

Ubisense SmartSpace is a modular software platform that manages real-time location and identification data from multiple sources to build industrial-scale mission-critical visibility and control applications.

SMARTSPACE CORE

OBJECTS & SPACES



The fundamental services needed for storing, managing and making sense of location data on a large scale in real time

SMART WORKERS

LOCATION RULES



Use real-world information to process raw location information to improve its quality and to detect relevant business information

BUSINESS RULES



Transform object location data into business intelligence, by integrating spatial facts about objects with their business properties, detecting important events and alerting the right people

VISIBILITY



Make location and business data visible via web browsers, using configurable personalized maps and forms to provide users with relevant graphical data

REPORTING



Store historical data in a relational database and generate web-enabled graphical reports or integrate with third-party report builders

APPS INTEGRATION



Exchange business data with other systems using extensible APIs that support integration via various interfacing technologies including REST services, .NET, and direct RDBMS integration

CONTROLS INTEGRATION



Control industrial systems with real-time protocols

RFID INTEGRATION



Receive identification data from a wide range of suppliers using industry-standard protocols

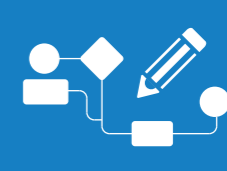
RTLS INTEGRATION



Receive real-time location data from a wide range of suppliers using industry-standard protocols

SMART DEVELOPER

RULES ENGINE DEVELOPER



Develop custom business logic using a drag and drop interface for application specific context-relevant events and application behaviour

REPORTS ENGINE DEVELOPER



Develop custom reports using a drag and drop editor for application-specific consumption of process data